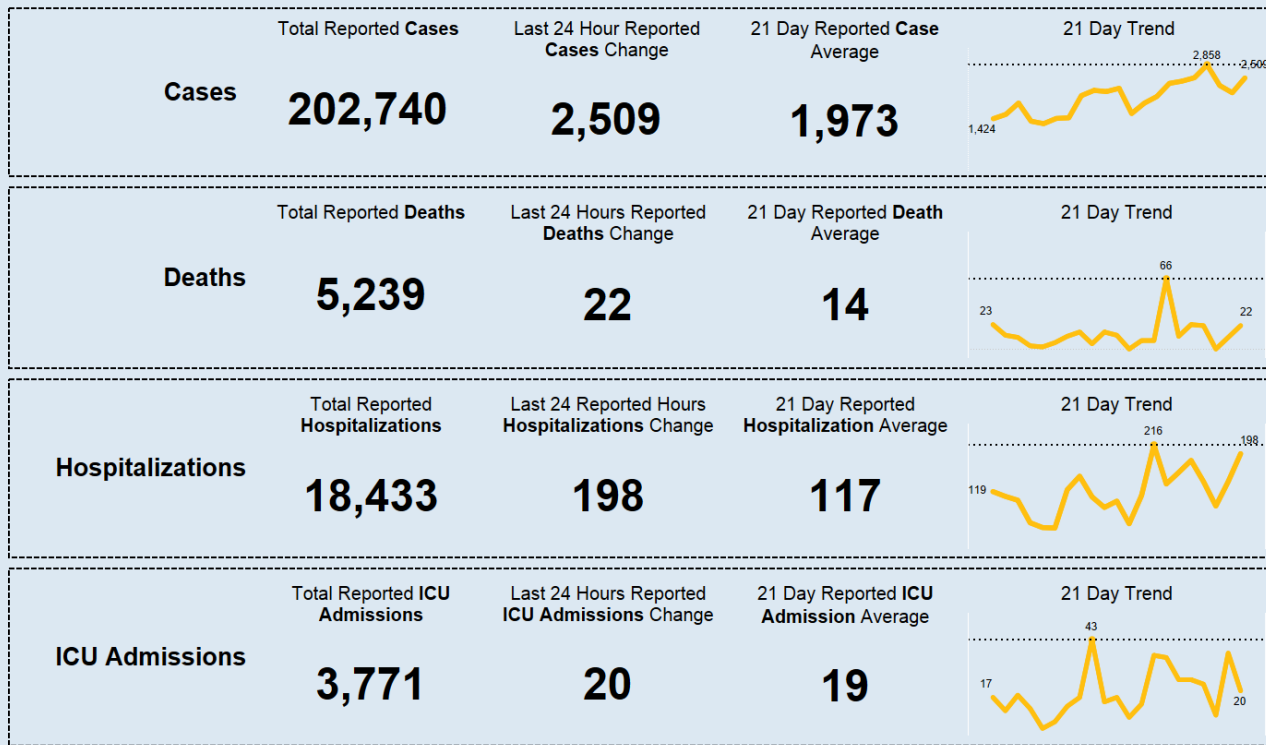


# COVID - 19 | Key Indicators

Last Updated: 10-27-20



All dates are based when an indicator is reported and will not match data in other COVID-19 dashboards provided by the Ohio Department of Health. All other dashboards are based on onset date, date of hospitalization, or date of death.

Note: Totals include Confirmed and CDC Expanded Case Definition (Probable)



Department of Health

# All 88 Ohio Counties Ranked by Highest Occurrence

## COVID-19 Cases

The 14-day period used for this table covers data from Oct. 12 to Oct. 25. The data were pulled on Oct. 26 and exclude incarcerated individuals.  
 Shaded counties meet the Centers for Disease Control and Prevention definition of "high incidence" of COVID-19.

COUNTY	Cases Per 100K (10/12 to 10/25)	Case Count (10/12 to 10/25)	POPULATION	COUNTY	Cases Per 100K (10/12 to 10/25)	Case Count (10/12 to 10/25)	POPULATION	COUNTY	Cases Per 100K (10/12 to 10/25)	Case Count (10/12 to 10/25)	POPULATION	COUNTY	Cases Per 100K (10/12 to 10/25)	Case Count (10/12 to 10/25)	POPULATION
Putnam	868.3	294	33,861	Shelby	277.8	135	48,590	Defiance	194.3	74	38,087	Jefferson	134.7	88	65,325
Auglaize	538.8	246	45,856	Clark	276.7	371	134,083	Franklin	185.5	2,443	1,316,756	Adams	133.6	37	27,698
Mercer	478.5	197	41,172	Preble	276.4	113	40,882	Williams	182.6	67	36,692	Washington	133.5	80	59,911
Holmes	398.1	175	43,960	Lawrence	272.4	162	59,463	Pickaway	181.3	106	58,457	Cuyahoga	133.2	1,645	1,235,072
Allen	384.0	393	102,351	Hancock	270.5	205	75,783	Richland	177.5	215	121,154	Carroll	130.0	35	26,914
Crawford	378.4	157	41,494	Montgomery	269.9	1,435	531,687	Delaware	160.2	335	209,177	Champaign	126.0	49	38,885
Monroe	373.5	51	13,654	Tuscarawas	265.3	244	91,987	Brown	158.9	69	43,432	Trumbull	124.3	246	197,974
Henry	370.3	100	27,006	Miami	262.6	281	106,987	Madison	158.7	71	44,731	Ashland	123.4	66	53,484
Noble	339.7	49	14,424	Scioto	261.6	197	75,314	Ottawa	157.9	64	40,525	Seneca	123.2	68	55,178
Van Wert	339.5	96	28,275	Guernsey	259.8	101	38,875	Mahoning	154.8	354	228,683	Columbiana	120.7	123	101,883
Jackson	339.4	110	32,413	Marion	253.5	165	65,093	Lucas	152.7	654	428,348	Perry	113.5	41	36,134
Paulding	337.4	63	18,672	Clinton	252.6	106	41,968	Summit	150.6	815	541,013	Sandusky	112.8	66	58,518
Ross	317.0	243	76,666	Licking	238.0	421	176,862	Portage	147.1	239	162,466	Geauga	112.1	105	93,649
Wayne	299.0	346	115,710	Vinton	236.9	31	13,085	Medina	146.3	263	179,746	Lake	111.7	257	230,149
Highland	296.6	128	43,161	Fairfield	231.6	365	157,574	Stark	145.2	538	370,606	Morgan	103.4	15	14,508
Greene	296.6	501	168,937	Fayette	227.9	65	28,525	Erie	144.1	107	74,266	Lorain	101.0	313	309,833
Butler	296.5	1,136	383,134	Muskingum	227.3	196	86,215	Wyandot	142.4	31	21,772	Belmont	86.6	58	67,006
Athens	295.4	193	65,327	Pike	208.8	58	27,772	Union	140.7	83	58,988	Hocking	84.9	24	28,264
Warren	292.4	686	234,602	Clermont	208.8	431	206,428	Gallia	140.5	42	29,898	Harrison	73.1	11	15,040
Fulton	292.0	123	42,126	Hardin	207.2	65	31,365	Coshocton	139.3	51	36,600	Ashtabula	68.9	67	97,241
Darke	281.7	144	51,113	Morrow	203.8	72	35,328	Logan	135.8	62	45,672	Huron	65.2	38	58,266
Hamilton	279.2	2,282	817,473	Wood	201.0	263	130,817	Knox	134.8	84	62,322	Meigs	56.8	13	22,907

# Top 20 Ohio Counties Ranked by Highest Occurrence COVID-19 Cases

The 14-day period used for this table covers data from Oct. 12 to Oct. 25. The data were pulled on Oct. 26 and exclude incarcerated individuals.

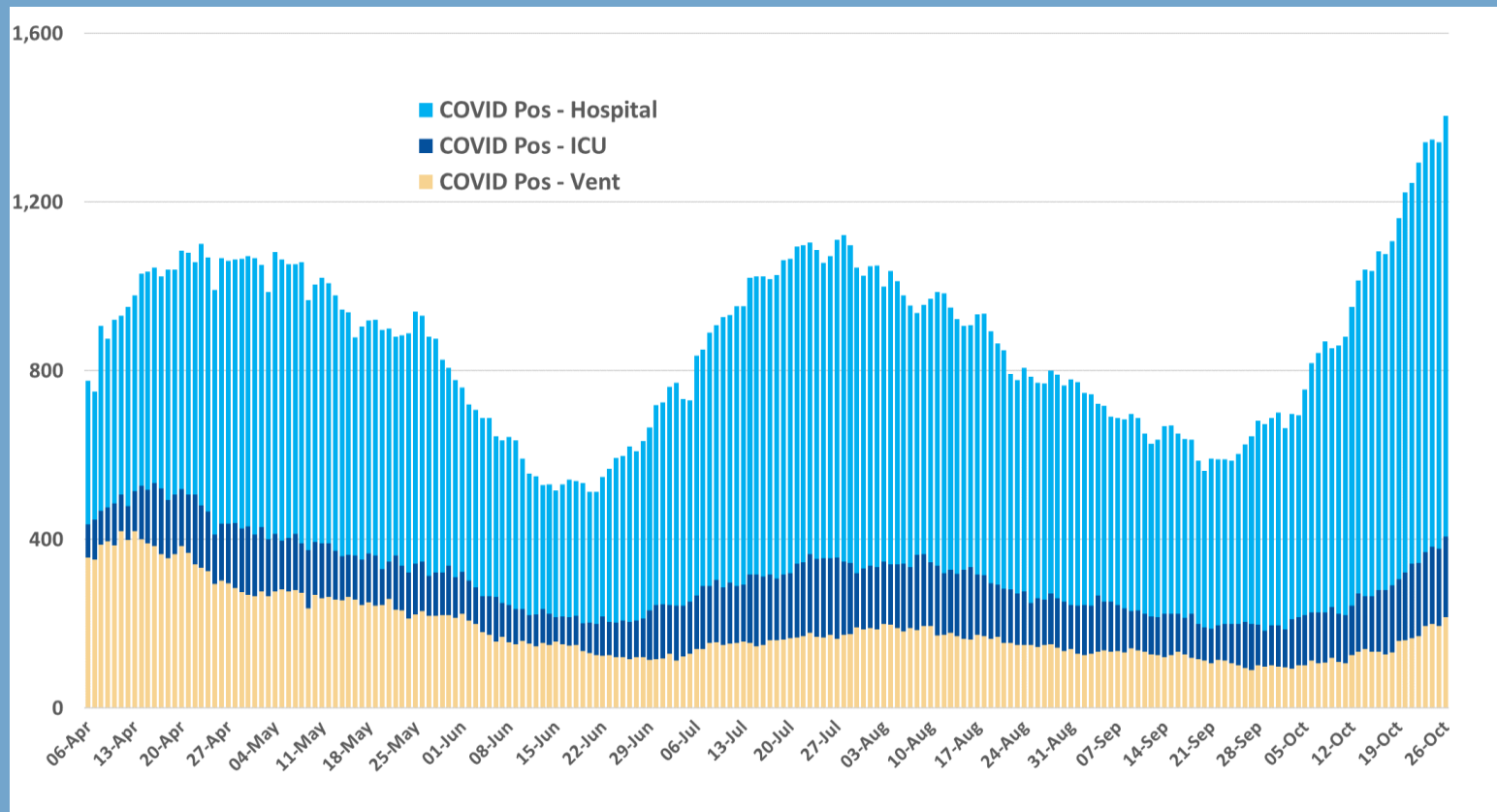
COUNTY	Cases Per 100K (10/12 to 10/25)	Case Count (10/12 to 10/25)	POPULATION
Putnam	868.3	294	33,861
Auglaize	538.8	246	45,656
Mercer	478.5	197	41,172
Holmes	398.1	175	43,960
Allen	384.0	393	102,351
Crawford	378.4	157	41,494
Monroe	373.5	51	13,654
Henry	370.3	100	27,006
Noble	339.7	49	14,424
Van Wert	339.5	96	28,275
Jackson	339.4	110	32,413
Paulding	337.4	63	18,672
Ross	317.0	243	76,666
Wayne	299.0	346	115,710
Highland	296.6	128	43,161
Greene	296.6	501	168,937
Butler	296.5	1,136	383,134
Athens	295.4	193	65,327
Warren	292.4	686	234,602
Fulton	292.0	123	42,126



Department  
of Health

[coronavirus.ohio.gov](https://coronavirus.ohio.gov)

# Current Confirmed COVID - 19 Patient Count in Ohio Hospitals by Day \*



\*Reported to the Ohio Department of Health by the Ohio Hospital Association. Data as of 10/26/2020.

# COVID-19 Community Spread

